



*TrackKing™*

*The intelligent choice for temperature and asset monitoring.*



# TracKing

TracKing is a dynamic, web-enabled trailer tracking system that provides traceability through the cold chain and increased shelf life while delivering temperature compliance and increased productivity.

TracKing gives fleet owners the tools to protect their assets, improve their response times and manage their operating costs while maintaining the highest food safety and quality standards.



## TracKing DELIVERS CONFIDENCE WITH INCREASED



### ASSET MANAGEMENT

- ▶ Locate and manage fleet on a map and find nearest Thermo King dealer
- ▶ Protect trailer and cargo by monitoring location, door openings and trailer locks
- ▶ Use Geo-Fence entries and exits to manage on-time departures and arrivals
- ▶ Manage trailer security with location and door lock/unlock alerts
- ▶ Fewer rejected loads and reduced liability
- ▶ On-time delivery and improved customer responsiveness



### YARD MANAGEMENT

- ▶ Monitor trailers and refrigeration unit temps remotely over wi-fi within yard
- ▶ Pre-cool trailers in the yard remotely using local wi-fi network
- ▶ Change OptiSet Plus™ cargo and unit profiles remotely for multiple units within yard at once
- ▶ Update refrigeration software remotely in yard - up to 10 units at a time



### REEFER MANAGEMENT

- ▶ Improve response times with real-time notifications of reefer alarms
- ▶ Increase unit uptime by managing reefer modes, battery voltage and fuel levels
- ▶ Proactively manage cargo temperatures and modes with two-way communication with the reefer unit
- ▶ Download the reefer datalogger remotely to run reefer diagnostics
- ▶ Increased productivity and profitability with data on reefer utilization



## ED CARGO PROTECTION AND FLEET EFFICIENCY.



### FUEL MANAGEMENT

- ▶ Optimize fuel consumption and lower fuel costs by unit and trip using Remote OptiSet Plus
- ▶ Minimize environmental impact with better asset and fuel management
- ▶ Receive notifications on sudden drops in fuel level
- ▶ Monitor reefer refueling events with fuel increase notifications
- ▶ Improve fuel consumption and increase fuel efficiency
- ▶ Reduce unauthorized fuel usage and monitor unplanned stops



### TEMPERATURE MANAGEMENT

- ▶ Monitor reefer setpoint and return air temperatures and receive out-of-range alerts
- ▶ Protect cargo and optimize reefer performance with Remote OptiSet Plus
- ▶ Monitor product level temperature sensors for food safety
- ▶ Pre-cool trailers at desired unit settings to prepare trailer for journey
- ▶ Improved traceability to maintain food safety standards



### DATA MANAGEMENT

- ▶ Remote datalogger download and temperature audit trails for traceability, cargo protection and proof-of-delivery
- ▶ Preventative Maintenance (PM) schedule compliance reports to manage asset utilization
- ▶ Track unit performance and prevent breakdowns with unit operations and fuel history reports
- ▶ Customize and schedule temperature, fuel, door, battery and unit performance reports

# REAL-TIME INFORMATION AT YOUR FINGERTIPS

TracKing allows users to access critical operational data and easily interact with their refrigerated trailers from the main tracking page. The new, updated TracKing platform has an enhanced, user-friendly interface and several new features, including:

- Dual-screen viewing to see entire fleet as well as maps, alarms and individual trailer details side-by-side without leaving the main page
- Smart, customizable filters with multiple attributes to filter trailers, making it easier for dispatchers to identify issues and take quick action
- Access to Quick Reports from main page
- Interactive temperature graph with ability to zoom into specific temperature and reefer events for improved cargo traceability and verification

## CARGO TRACEABILITY AND COMPLIANCE

For optimal temperature management, food safety and over-the-road visibility, customize your tracking view to see the data that is most important to your fleet.

The screenshots show the TracKing web interface. The top screenshot displays a 'Tracking List' with columns for Status, Vehicle, Last Known Position, and various sensor readings (SP1, Alt, DA1, Voltage, Battery Voltage, Fuel Level). Below it is an 'Alarm History Summary' for a specific period, listing alarm types like 'Check Refrigeration Capacity' and 'Low Main Battery' with their severity levels and locations. The bottom screenshot is a 'Temperature Data' graph showing temperature fluctuations over time for a specific vehicle.

Utilize comprehensive temperature reports in graphic or tabular form.

Quickly spot temperature issues to reduce the risk of load loss.

## MONITORING ON-THE-GO



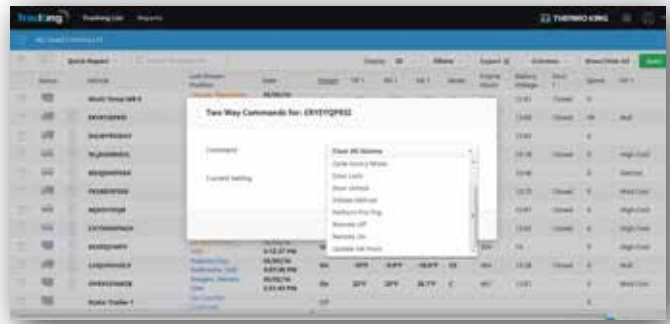
Monitor real-time temperature alarms, fuel levels, door openings and find the nearest Thermo King dealer.

Improve fleet up-time by receiving instant notifications of critical events, including unit setting errors and unauthorized access. The TracKing mobile app is compatible with both Google Android and Apple iOS devices.

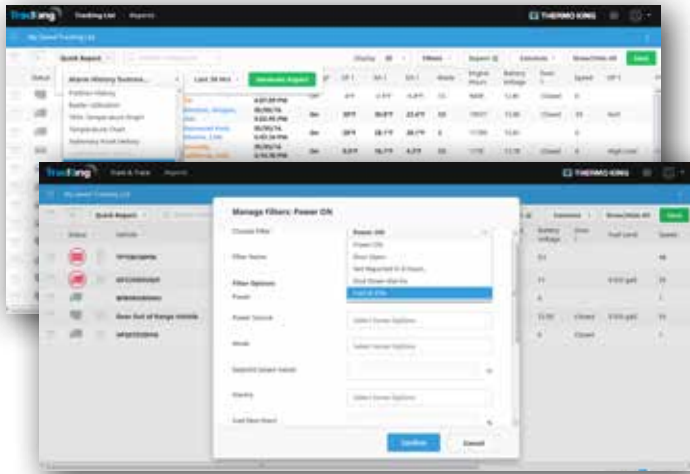


# ENHANCED FLEET EFFICIENCY

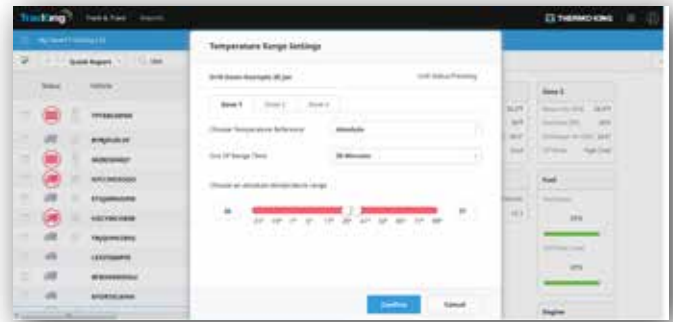
- Lower operating costs and improve ROI
- Reduce manual interventions to manage temperature exceptions with 2-way interaction with the reefer unit
- Monitor temperature out-of-range and door notifications to improve response times to exceptions
- Set temperature profiles and reefer modes remotely using remote OptiSet Plus



**View 2-way Commands:** Reduces the chance of human error.



**Reefer Performance, Temperature and Analytics Reports:** Access standard and customized reports and view the most important data.

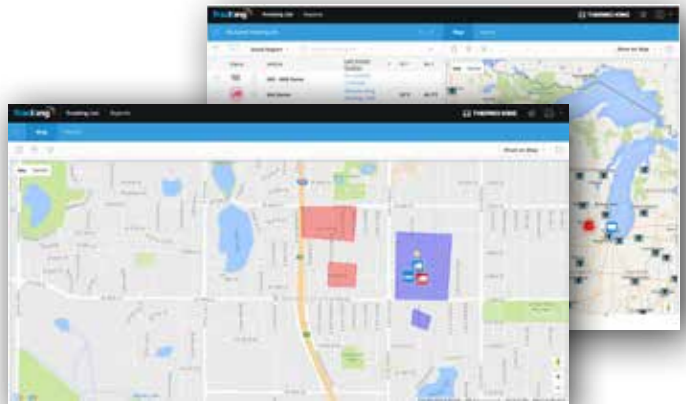
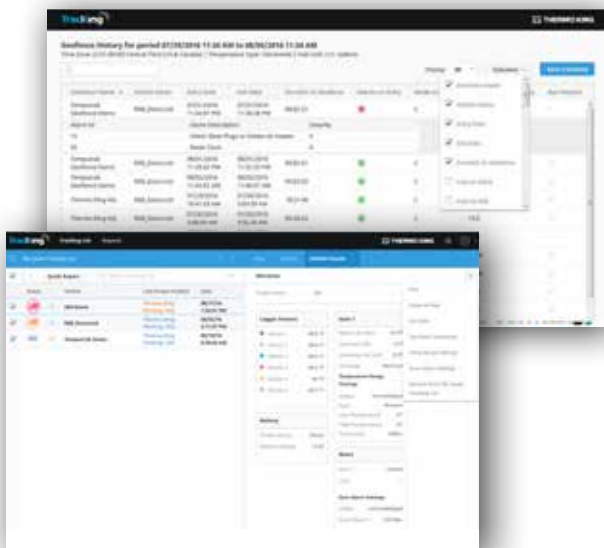


**Temperature Range Settings:** Set temperature notifications for entire fleet or individual trailers for traceability and cargo safety.

# ASSET MANAGEMENT AND UPTIME

Check and manage fuel usage and levels, temperature and setpoint, and service due alerts.

- Monitor real time trailer locations on a map
- See and manage all fleet alarms
- Monitor fleets by geo-fenced locations and run geo-fence history reports - how long assets are stationary, reefer run times, fuel level and battery voltage
- View real-time reefer alarms, sudden drops in fuel and door opening alarms by location
- Interact with individual trailers while maintaining view of entire fleet





## SPECIFICATIONS

Feature	Description
Communications	Cellular (Global GSM/GPRS), Wi-Fi (802.11 b/g/n), Dual Mode
Compatibility	SB, SB-30 , Precedent (Wi-Fi available for SB-30 and Precedent only)
Serial Ports	2 RS-232
Back-up Battery	Standard
Memory	32 Mb
Power Usage	10-16 VDC
Operational Temperature Range	-40°C to +85°C
Dimensions (LxWxH)	(6.22"x3.19"x2.02")
Environmental	RoHS Compliant
Protection	0 to 36V reversed
I/Os	Digital and analog I/Os for door and fuel sensors
Agency Regulatory Certifications	FCC, ICC, CE, PTCRB
TracKing Firmware Upgrade	Over the air (OTA)
Refrigeration Unit Firmware Upgrade	OTA upgrades with TracKing Wi-Fi & TracKing dual mode
Remote OptiSet+	Upload cargo profiles over the air (OTA)

## OPTIONS

### Sensors

Wireless CargoLink™ Door Sensors  
 CargoWatch™ Air Temperature Sensors  
 CargoWatch™ Food Safe Temperature Sensor  
 Ultrasonic Fuel Level Sensor

### Data Loggers and Printers

DAS  
 TouchPrint  
 CargoPrint

### ThermoLite™ Solar Panels

### Mi-Jack Systems Trailer Door Lock Connectivity





## INCREASE FLEET EFFICIENCY WITH DATA INTEGRATION

TrackKing can integrate temperature, unit alarms, trailer locations, unit settings and much more, giving fleets the ability to monitor critical cargo through the dispatch process from pickup through delivery. Thermo King has partnered with multiple fleet management and asset maintenance software companies, as well as various customer IT departments, to enable seamless data integration. Depending on the system, TrackKing enables the generation of temperature, fuel, door opening and reefer alarm notifications within the fleet management system. It also integrates unit engine hours and alarms into asset maintenance systems, creating maintenance schedules and populating service tickets.

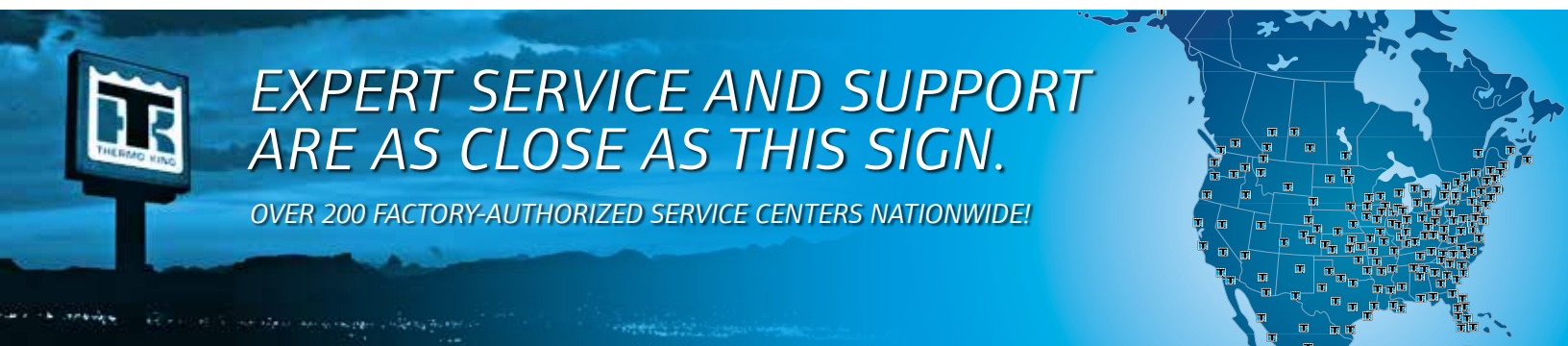
## COMBINE THERMO GARD™ ASSURANCE AND TRACKING FOR ULTIMATE FLEET MANAGEMENT

*Get TrackKing with Thermo Gard Assurance and utilize real-time engine hours and reefer alarms data to assess reefer health and make informed decisions to schedule fleet maintenance and manage maintenance costs.*

*Benefits of combining TrackKing with Thermo Gard Assurance are:*



- *Protect your reefer unit with TrackKing and Thermo Gard assurance*
- *Trailer location information to expedite service*
- *Real-time alarms for improved diagnostics and more uptime*
- *Diagnostics made quicker and easier by downloading reefer unit data loggers remotely*
- *Proactive Preventive Maintenance (PM) due notifications*
- *PM reports updated within 24 hours*



# EXPERT SERVICE AND SUPPORT ARE AS CLOSE AS THIS SIGN.

OVER 200 FACTORY-AUTHORIZED SERVICE CENTERS NATIONWIDE!



Ingersoll Rand (NYSE:IR) advances the quality of life by creating comfortable, sustainable and efficient environments. Our people and our family of brands—including Club Car®, Ingersoll Rand®, Thermo King® and Trane®—work together to enhance the quality and comfort of air in homes and buildings; transport and protect food and perishables; and increase industrial productivity and efficiency. We are a \$13 billion global business committed to a world of sustainable progress and enduring results.



[ingersollrand.com](http://ingersollrand.com)

